

# Portrait Drawing from Life

*With Jo Ellen Reinhardt*



Learning to draw the portrait is a delightful journey. It challenges the artist to see subtle angles and shapes of the human form. This class is for both the beginner to professional artist wishing to learn about drawing and painting the portrait or brush up on their skills. This course will focus on composition, values, edges, lite anatomy and more. Each class will start with a quick demonstration. One on one instruction will be given to help individual students meet their personal goals. Classes will be taught in charcoal. Optional homework will be assigned to help students fine tune their skills.

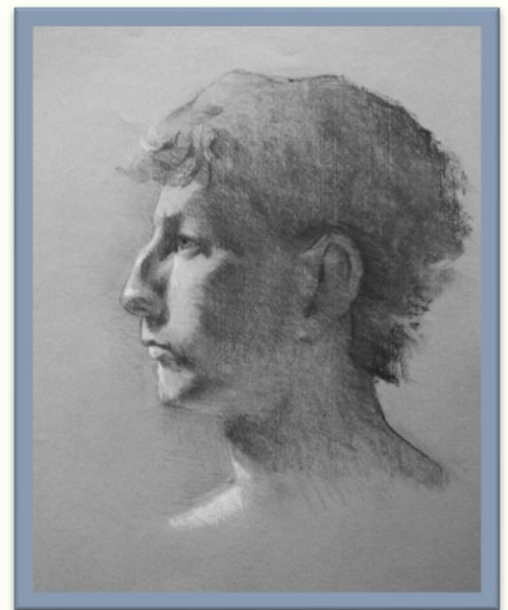
**DATES:** Saturdays, April 12<sup>th</sup> – May 17<sup>th</sup>, 2025 (5 weeks)  
No class on May 3<sup>rd</sup>

**HOURS:** 9:00 AM - NOON

**COST:** \$220.00 per person, includes model fee. Your payment guarantees your place. All payments are charged through the website are processed through PayPal, a secured site. You do not need to have a PayPal account in order charge your class. A suggested materials list will be provided upon registration.

**LEVEL:** Beginner to Professional

**AGE:** Mature Teens to Adults



Portrait Study from Life,  
Charcoal & White Chalk

**Student Cancellation Policy:** Any cancellation received outside of 30 days will result in a 20% cancellation fee. Cancellations within 30-8 days out will result in a 50% penalty. There are no refunds for any cancellation received one week prior to the start of the class.